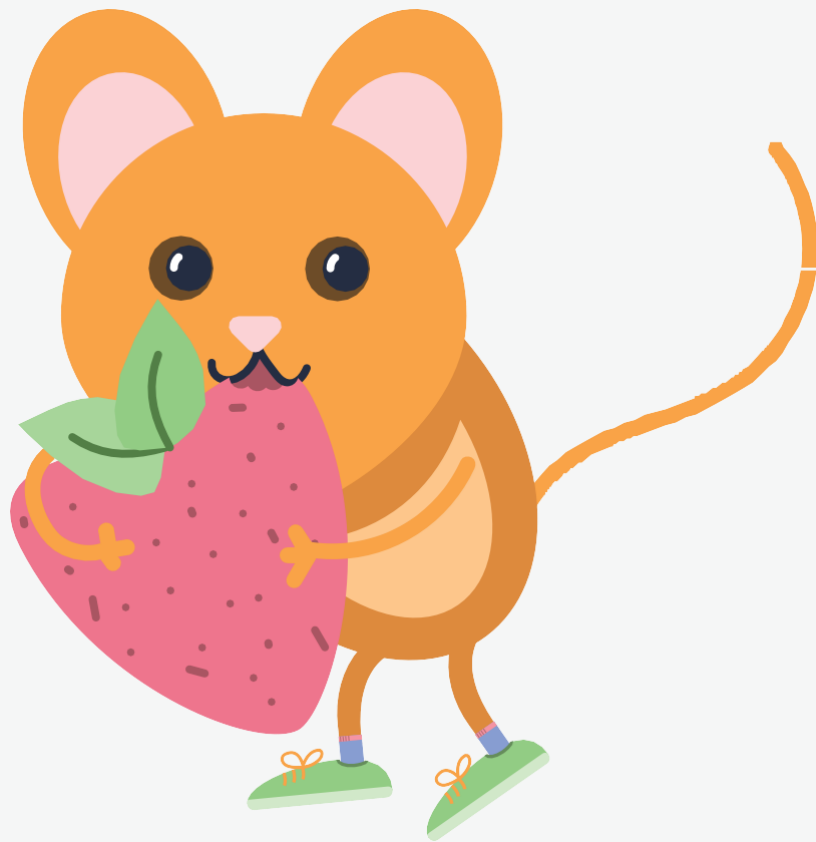


Katherine Ruhle

Music

There's a Mouse!

SA with Piano



engage, inspire, connect

There's a Mouse!

With a sense of fun!
♩ = 110 - 120

SAMPLE ONLY

Katherine Ruhle

Musical notation for the first system, including a vocal line and piano accompaniment. The tempo is marked as 110-120. The key signature is one sharp (F#) and the time signature is 12/8. The piano part features a steady bass line of quarter notes in the left hand and a more active melody in the right hand.

4 *mp*

There's a mouse, in the house, and he's sneak - y.

Musical notation for the second system, including a vocal line and piano accompaniment. The vocal line continues with the lyrics. The piano accompaniment includes a *mp* dynamic marking and a *p* dynamic marking at the end of the system.

8

There's a mouse, in the house, and he's cheek - y.

Musical notation for the third system, including a vocal line and piano accompaniment. The piano accompaniment includes a *mp* dynamic marking and a *p* dynamic marking at the end of the system.

12 *cresc.* *mf*

He creeps out late at night, when no-one is in sight, and nib-bles on the bread,

cresc. *mf*

He creeps out late at night, when no-one is in sight, and nib-bles on the bread,

Musical notation for the fourth system, including a vocal line and piano accompaniment. The piano accompaniment includes *mp* and *cresc.* dynamic markings, and a *mf* dynamic marking at the end of the system.

16 Mouse nibbling sounds *p*

Tsk, tsk, tsk, tsk, tsk. There's a mouse,

Tsk, tsk, tsk, tsk, tsk. *mp* There's a mouse, in the

dim. *mp*

SAMPLE ONLY

19

in the house. Yes, he's sneak - y.

house, and he's sneak - y. There's a

p *mp*

22 *mp*

There's a mouse, in the house. Yes, he's chee-ky. He

mouse, in the house, and he's cheek-y. He

p *mp*

26 *cresc.* *mf*

creeps out late at night, when no - one is in sight, and nib - bles on the bread,

cresc. *mf*

creeps out late at night, when no - one is in sight, and nib - bles on the bread,

cresc. *mf*

SAMPLE ONLY

29 Mouse nibbling sounds

Tsk, tsk, tsk, tsk, tsk. and nib - bles on the fruit.

Tsk, tsk, tsk, tsk, tsk. and nib - bles on the fruit.

31 Mouse nibbling sounds *rall.*

Tsk, tsk, tsk, tsk, tsk. and nib - bles on what-ev - er he can find.

Tsk, tsk, tsk, tsk, tsk. and nib - bles on what-ev - er he can find.

rall.

